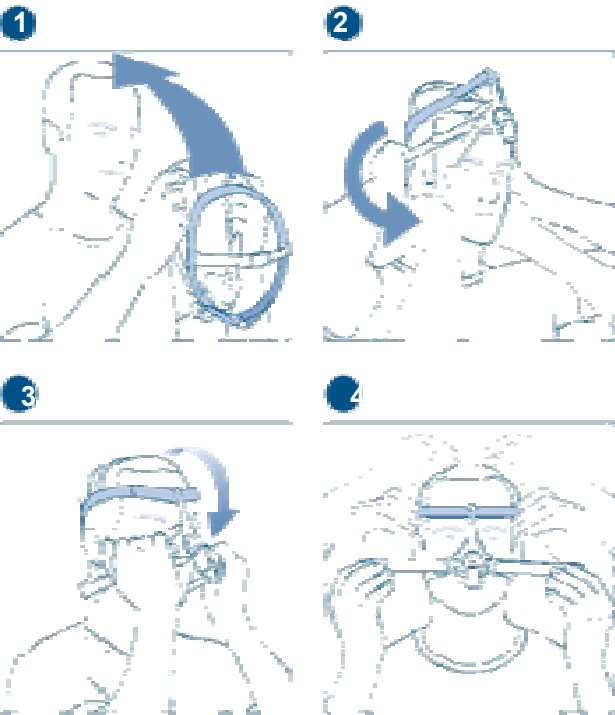


FITTING YOUR MASK



F&P Eson™ 2  
NASAL  
MASK

Use and Care  
Guide

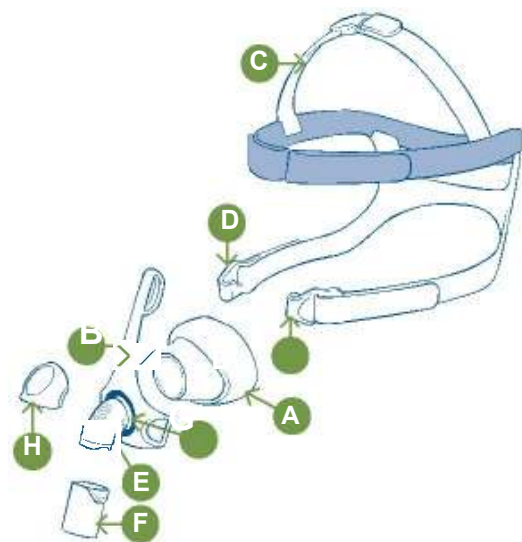


F&P Eson™ 2

Thank you for choosing  
your F&P Eson 2.

This nasal mask has been  
designed to make it easier for you  
to fit CPAP therapy into your life.  
This is your mask Use and Care  
Guide. Please read the entire guide  
before you first use this mask.  
Following the steps in this guide,  
and referring to the images and  
diagrams, will assist you with the  
assembly, fitting and daily use of  
your F&P Eson 2 Nasal Mask.

REF 185048434 REV B 2015-11 © 2015 Fisher & Paykel Healthcare Limited



Rx only

CE 0123

## LANGUAGES

page	language
------	----------

- |    |                             |
|----|-----------------------------|
| 1  | English                     |
| 11 | Français (French)           |
| 21 | Español (Spanish)           |
| 31 | Bahasa Malaysia (Malaysian) |
| 41 | ไทย (Thai)                  |
| 51 | 简体中文版 (Simplified Chinese)  |
| 61 | 繁體中文版 (Traditional Chinese) |
| 71 | 한국어 (Korean)                |
| 81 | 日本語 (Japanese)              |

### Manufacturer

Fisher & Paykel Healthcare Ltd  
15 Maurice Paykel Place  
East Tamaki, Auckland 2013

PO Box 14 348, Panmure  
Auckland 1741  
New Zealand

Tel: +64 9 574 0100  
Fax: +64 9 574 0158  
Email: [info@fphcare.co.nz](mailto:info@fphcare.co.nz)  
Web: [www.fphcare.com](http://www.fphcare.com)

### Australia

Fisher & Paykel Healthcare Pty Limited  
36–40 New Street, PO Box 167  
Ringwood, Melbourne  
Victoria 3134, Australia

Tel: +61 3 9879 5022  
Fax: +61 3 9879 5232

### Austria

Tel: 0800 29 31 23  
Fax: 0800 29 31 22

### Benelux

Tel: +31 40 216 3555  
Fax: +31 40 216 3554

### China

Tel: +86 20 3205 3486  
Fax: +86 20 3205 2132

### Finland

Tel: +358 (0)405 406618  
Fax: +46 (0)8 36 6310

### France

Tel: +33 1 6446 5201  
Fax: +33 1 6446 5221

### Germany

Tel: +49 7181 98599 0  
Fax: +49 7181 98599 66

### India

Tel: +91 80 4284 4000  
Fax: +91 80 4123 6044

### Irish Republic

Tel: 1800 409 011

### Italy

Tel: +39 06 7839 2939  
Fax: +39 06 7814 7709

### Japan

Tel: +81 3 5117 7110  
Fax: +81 3 5117 7115

### Korea

Tel: +82 2 6205 6900  
Fax: +82 2 6309 6901

### Northern Ireland

Tel: 0800 132 189

### Russia

Tel and Fax: +7 495 782 21 50

### Spain

Tel: +34 902 013 346  
Fax: +34 902 013 379

### Sweden

Tel: +46 8 564 76 680  
Fax: +46 8 36 63 10

### Switzerland

Tel: 0800 83 47 63  
Fax: 0800 83 47 54

### Taiwan

Tel: +886 2 8751 1739  
Fax: +886 2 8751 5625

### Turkey

Fisher Paykel Sağlık Ürünleri  
Ticaret Limited Şirketi,

Alinteri Bulvarı 1161/1 Sokak  
No. 12-14, P.O. Box 06371  
Ostim, Ankara, Turkey

Tel: +90312 354 34 12  
Fax: +90312 354 31 01

### UK EC REP

Fisher & Paykel Healthcare Ltd  
Unit 16, Cordwallis Park  
Clivemont Road, Maidenhead  
Berkshire SL6 7BU, UK

Tel: +44 1628 626 136  
Fax: +44 1628 626 146

### USA/Canada

Tel: +1 800 446 3908  
or +1 949 453 4000  
Fax: +1 949 453 4001

## INTENDED USE

The F&P Eson 2 Nasal Mask is intended to be used by individuals who have been diagnosed by a physician as requiring CPAP or Bi-Level therapy. The F&P Eson 2 Nasal Mask is intended for single patient adult ( $\geq 66$  lb (30 kg)) use in the home and for multiple patient adult use in the hospital or other clinical setting where proper disinfection of the device can occur between patient uses.

## OPERATING INSTRUCTIONS

- The operating pressure range of your mask is 4 to 30 cmH<sub>2</sub>O.
- The operating temperature range of your mask is 5 to 40 °C (41 to 104 °F).
- Before using your mask each time, you should:
  - i. Inspect it for damage or deterioration. If there is any visible deterioration (cracking, tears, etc.), do not use your mask, and seek replacement part(s) from your healthcare provider.
  - ii. Inspect the exhaust holes on the Elbow . Ensure air is flowing through these holes and do not use if blocked.
  - iii. Make sure path of air in mask is free from objects that may prevent breathing.

**NOTE: Failure to follow the operating instructions above may compromise the performance and safety of the mask.**

## I MASK PARTS

Refer to the mask diagram on the inside cover of this guide.

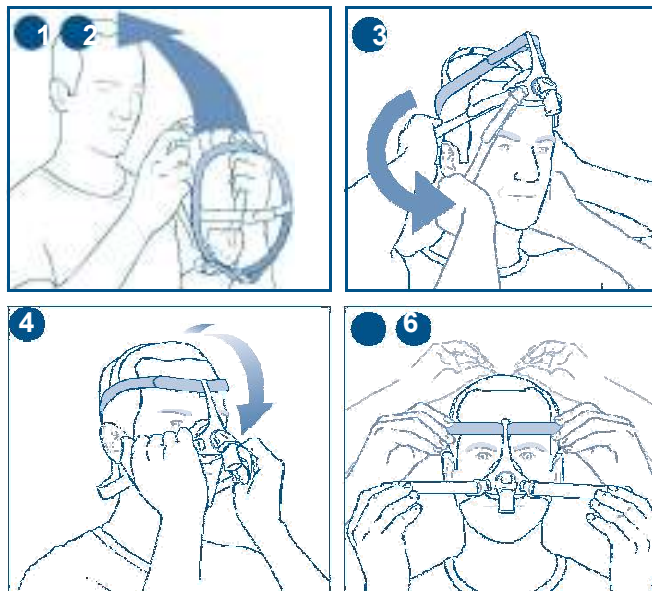
- |                         |                       |
|-------------------------|-----------------------|
| <b>A</b> Silicone Seal  | <b>E</b> Elbow        |
| <b>B</b> Mask Frame     | <b>F</b> Swivel       |
| <b>C</b> Headgear       | <b>G</b> Frame Socket |
| <b>D</b> Headgear Clips | <b>H</b> Diffuser     |

**Note:** The Elbow **E** and the Headgear Clips **D** are not intended to be removed from the mask by the home user. If removed unintentionally, refer to technical information page for assembly.

## ii FITTING YOUR MASK

1. Remove all packaging before using your mask.
2. Hold open the bottom straps of the Headgear **C** with the Mask Frame **B** facing downwards.
3. Guide the headgear **C** over your head so that the silicone seal **A** is resting on your forehead.
4. Place your hands on the bottom straps on either side of the mask frame **B** and pull out and downwards. Ensure the silicone seal **A** rests over your nose and the blue top strap is sitting on your forehead.
5. Gently tighten the headgear straps of the mask headgear **C** starting with the blue forehead straps followed by the bottom straps.

6. The forehead straps should rest horizontally on the forehead, just above the ears. If required the crown strap can be adjusted to achieve this.



### Useful fitting tips:

- If you are experiencing mask leaks, you may need to lift the Silicone Seal **A** off your face and reposition it again.
- Ensure the mask's headgear straps are not fastened too tightly.
- The forehead straps should rest horizontally on the forehead, just above the ears.



### DISASSEMBLY FOR CLEANING

1. Unhook the Headgear Clips **D** from the Mask Frame **B**.
2. Slide the forehead straps of the Headgear **C** downwards from the top of the Mask Frame **B**.
3. Remove the Silicone Seal **A** from the Mask Frame **B**.
4. Remove the Swivel **F** from the Elbow **E**.
5. Remove the Diffuser **H** from the Elbow **E**.



### CLEANING YOUR MASK AT HOME

**Wash your mask (excluding the Headgear **C** and Diffuser **H**) after each use:**

1. Hand-wash your mask in soap dissolved in lukewarm water. Do not soak for more than 10 minutes.
2. Rinse thoroughly with fresh water, ensuring that all soap residue has been removed.
3. Leave all parts to dry out of direct sunlight before reassembling.

**Wash your Headgear **C** and Diffuser **H** after 7 days of use:**

1. Hand-wash your Headgear **C** in soap dissolved in lukewarm water. Do not soak your Headgear for more than 10 minutes.
2. Gently hand-wash the Diffuser **H** in soap dissolved in lukewarm water; avoid scrubbing the material. Do not soak your Diffuser for more than 10 minutes.
3. Rinse thoroughly with fresh water, ensuring that all soap residue has been removed.
4. Leave all parts to dry out of direct sunlight before reassembling.

#### Cleaning Cautions:

- Do not clean your mask with products containing alcohol, anti-bacterial agents, antiseptic, bleach, chlorine or moisturizer.
- Do not clean your mask in a dishwasher.
- Do not store your mask in direct sunlight.

**The above actions may deteriorate or damage the mask and shorten its life. If there is any visible deterioration do not use your mask, but seek replacement part(s).**

## V

### MASK ASSEMBLY

1. Push the Silicone Seal **A** onto the Mask Frame **B** until you hear it click firmly into place.
2. Push the Swivel **F** onto the Elbow **E**.
3. Place the Diffuser **H** onto the Elbow **E**.

#### To assemble headgear:

4. Thread the Headgear Clips **D** back onto Headgear **C**.
5. Thread the forehead straps of the Headgear **C** through the slots in the Mask Frame **B**.
6. Hook the Headgear Clips **D** onto the Mask Frame **B**.

1



2 3



4 5



6



## OXYGEN/PRESSURE PORT CONNECTOR

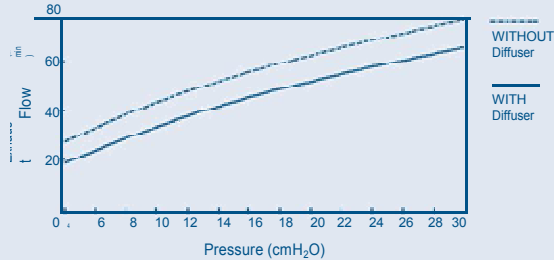
If pressure readings and/or additional oxygen are required, an Oxygen/Pressure Port Connector is available (REF 900HC452). Please contact your healthcare provider.

## TECHNICAL SPECIFICATIONS

### F&P ESON 2 EXHAUST FLOW

The F&P Eson 2 Nasal Mask has a unique Diffuser System that is designed to diffuse air which is expelled from the mask. This reduces draft. The Diffuser does not significantly change the amount of air flowing from the mask; therefore, the mask can be used with or without the Diffuser.

Pressure (cmH <sub>2</sub> O)	4	6	8	10	12	14	16	18	20	22	24	26	28	30
Flow with Diffuser (L/min)	19	25	29	34	38	41	45	48	52	55	58	61	63	66
Flow without Diffuser (L/min)	27	34	39	44	48	52	56	59	62	66	69	71	74	77



### RESISTANCE TO FLOW

Pressure drop through mask with Diffuser @ 50 L/min:  $0.19 \pm 0.1$  cmH<sub>2</sub>O  
 Pressure drop through mask with Diffuser @ 100 L/min:  $0.80 \pm 0.1$  cmH<sub>2</sub>O  
 Pressure drop through mask without Diffuser @ 50 L/min:  $0.17 \pm 0.1$  cmH<sub>2</sub>O  
 Pressure drop through mask without Diffuser @ 100 L/min:  $0.73 \pm 0.1$  cmH<sub>2</sub>O

### MASK DEAD SPACE

Small: 69 cc                      Medium: 86 cc                      Large: 98 cc

### SOUND

The sound power level of mask with Diffuser is 21.3 dBA, with uncertainty 2.5 dBA  
 The sound pressure Level of the mask with Diffuser is 13.3 dBA, with uncertainty 2.5 dBA.  
 The sound power level of mask without Diffuser is 31.4 dBA, with uncertainty 2.5 dBA  
 The sound pressure Level of the mask without Diffuser is 23.4 dBA, with uncertainty 2.5 dBA.

The F&P Eson 2 Nasal Mask and accessories are not made with natural rubber latex.

## MULTI-PATIENT CLEANING INSTRUCTIONS

**Your F&P Eson 2 Nasal Mask is provided patient-ready.**

To reuse between patients please follow the guidelines on the following website:  
[www.fphcare.com](http://www.fphcare.com)

If you do not have Internet access please contact your Fisher & Paykel Healthcare Representative. HEADGEAR (C AND D)

1. Hand-wash the Headgear (C and D) in soap dissolved in lukewarm water. Air-dry out of direct sunlight.

### DIFFUSER (H)

2. The Diffuser (H) is for single patient use. Replace between patients.

### ALL OTHER PARTS

3. Clean using a mild alkaline detergent according to manufacturer's instructions e.g. soak in 1% Alconox for 10 minutes, gently scrub components in solution with a soft non-metallic brush, rinse in 5 liters of potable water, repeat rinse. Dry completely out of direct sunlight.
4. HIGH-LEVEL DISINFECTION  
 Pasteurize at  
 75 °C for 30 mins,  
 80 °C for 10 mins or  
 90 °C for 1 min.

The F&P Eson 2 Nasal Mask has been validated to withstand 20 cycles of the above parameters. Failure to properly clean this device may result in inadequate disinfection. It is the user's responsibility to qualify any deviations from the recommended method of reprocessing.

## ADVANCED DISASSEMBLY/ASSEMBLY

Please refer to the diagrams at the back of this guide.

- 1 To disassemble Elbow (E) from Mask Frame (B):
  - Position Elbow (E) so it is facing upward.
  - Pull Elbow (E) downward, away from Mask Frame (B), until Elbow (E) pops out.
- 2 To assemble Elbow (E) back into Mask Frame (B):
  - Position Elbow (E) so it is facing upward.
  - Push Elbow (E) at an angle and rotate into the Mask Frame (B) until the Elbow (E) pops in.
- 3 To disassemble Headgear Clips (D) from the Headgear (C):
  - Lie the flexed tabs flat against the bottom straps of the Headgear (C) and guide through the Headgear Clip opening.
  - Unhook Headgear Clips (D) from Mask Frame (B).
- 4 To assemble Headgear Clips (D) with the Headgear (C):
  - Hook Headgear Clips (D) back onto Mask Frame (B).
  - Thread the bottom straps of Headgear (C) through the Headgear Clips (D) with flexed tabs on Headgear (C) straps facing away from Mask Frame (B).